

# NiCo

www.nico.co.uk



## ancillary devices

### with added advantages for windows

Nico produces a wide range of ancillary devices which complement our essential window hardware. All are designed and manufactured in the UK and offer unique features and benefits.



*Nico X-tra Bolt fitted to window for added security.*

#### **X-TRA BOLT**

The Nico X-tra Bolt is approved by Secured by Design and provides additional window security.

Manufactured from steel, it consistently gives excellent test results and enables windows to meet the requirements of PAS024:2016.

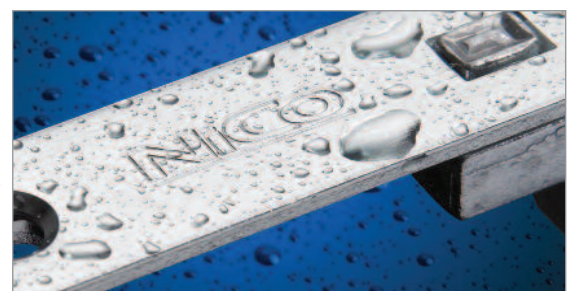
#### **SASH COMPRESSOR**

The Nico Sash Compressor is precisely designed to provide additional compression on large top hung windows.

Simple fitting and operation makes it ideal for new or retrofit installations.



*Nico Sash Compressor.*



*RIGHT: Nico Supercoat 500 is a special corrosion resistant coating. Test Results indicate that finished products have achieved grade 5 (exceptionally high resistance to corrosion) as defined in BS EN 1670:2007, making them suitable for coastal or industrial environments.*

**Secured by Design**



**Police Preferred Specification**

**MADE IN BRITAIN**

**SBD Approved Products  
[Xtra-Bolt and Dummy  
Sash Clips]**

**Easy and simple to fit**

**Suitable for PVCu, timber  
and aluminium profiles**

**Complement Nico range  
of Window Hinges**

**ISO 9001:2015  
Manufacturer**

**For sales, call 01255 422333 or email [sales@nico.co.uk](mailto:sales@nico.co.uk)**

## Fitting Instructions

### X-TRA BOLT HINGE PROTECTOR

Fix one half of the Bolt to the frame 50-100mm above the Friction Hinge nose cap and fix the other half opposite to it on the sash.

The frame bolt should face towards the external edge of the frame and the sash bolt should face towards the internal edge of the sash.

The X-tra Bolt should be fixed into window reinforcement if possible. If not, fix to the frame with 4.8mm screws.

### SASH COMPRESSOR

Sash compressors should be fitted in the middle of the sash if possible to optimise performance and give the smoothest operation.

# ancillary devices

## DUMMY SASH CLIPS

Nico's profile-specific Dummy Sash Clips securely position and locate sashes into place without the need for friction hinges or complicated assemblies.

With high performance polymer construction that is effective and durable, the Clips are available in removable and non-removable options.

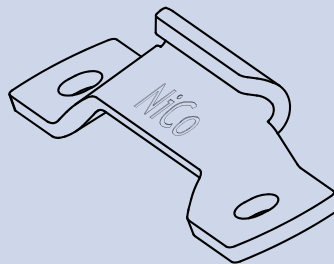


ABOVE: Removable Dummy Sash Clip.  
RIGHT: Non-removable option.

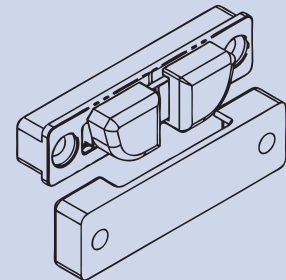


## Technical Data

### X-tra Bolt

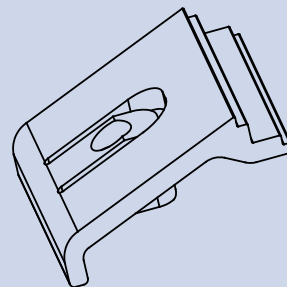


### Sash Compressor

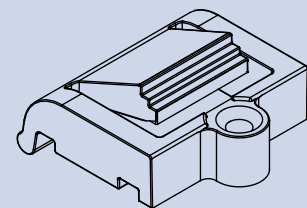


Description	Nominal Cavity Size	Finish	Part No	Boxed Quantity
X-tra Bolt	13mm	S500	8000 0 13 44	200
X-tra Bolt	17mm	S500	8100 0 17 44	200
Sash Compressor	Catch Assembly	S500	6100	100
Sash Compressor	13mm Keep	S500	6113	100
Sash Compressor	17mm Keep	S500	6117	100

### Removable Sash Clip



### Non-Removable Sash Clip



Description	Part No	Boxed Quantity
Removable Dummy Sash Clip	6224	200
Non-Removable Dummy Sash Clip	3072	200

Secured by Design



Official Police Security Initiative

A SBD Member Company



ISO 9001 Cert No: Q 09355

### Nico Manufacturing Ltd

Oxford Road, Clacton-on-Sea  
Essex CO15 3TJ, England.

Tel: 01255 422333

Fax: 01255 432909

E-mail: sales@nico.co.uk

Web: www.nico.co.uk

For sales, call 01255 422333 or email sales@nico.co.uk