

# NiCo

www.nico.co.uk



## telescopic shootbolt

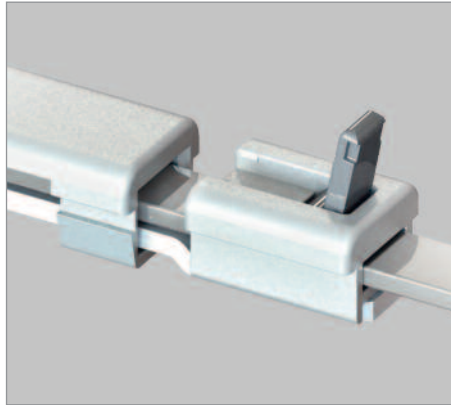
### for fast fitting and fewer parts

The Nico Telescopic Shootbolt is designed for strength and reliability, and has been successfully tested as a critical component within PAS024:2016.

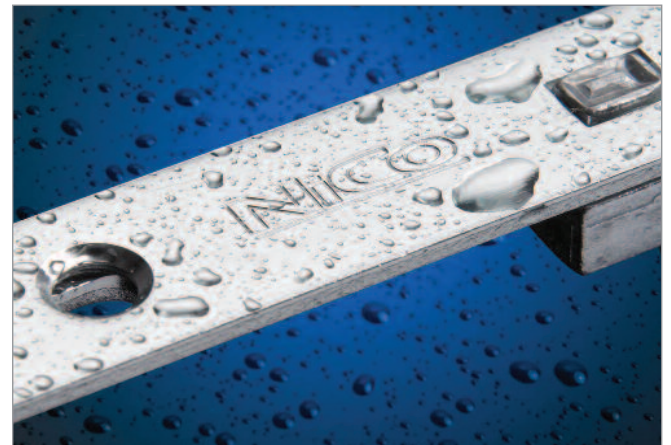
Built to the most exacting standards, it provides an effective, secure locking system and a smooth closing action.

The unique patented telescopic design means no cropping and great time savings in fitting.

Steel shootbolts with an adjustable throw lock into robust profile specific keeps, with mushroom cams providing additional strength and weatherseal compression adjustment.



ABOVE: Unique telescopic design reduces stockholding and fitting time.



ABOVE: Nico Supercoat 500 is a special corrosion resistant coating. Test Results indicate that finished products have achieved grade 5 (exceptionally high resistance to corrosion) as defined in BS EN 1670:2007, making them suitable for coastal or industrial environments.

**Secured by Design**



**Police Preferred Specification**

#### MADE IN BRITAIN

Unique telescopic design for faster fitting

Patented design

Adjustable weatherseal compression

Meets PAS024:2016 as a critical component

Supercoat 500 silver corrosion resistant finish

ISO 9001:2015 Manufacturer

**For sales, call 01255 422333 or email [sales@nico.co.uk](mailto:sales@nico.co.uk)**

## Fitting Instructions

With the shootbolt in the locked position lower it into the sash. Use a handle to align the gearbox correctly to the prepared sash. Snap fit the ends of the drive section into the eurogroove and fix the drive section using screws.

With the shootbolt still in the locked position push the telescopic shoots back into the drive section. Fix into position with countersunk headed screws.

Set the shootbolt throw and press the toggle down fully to lock the telescopic shoots into position.

Full instructions are available upon request.



ISO 9001 Cert No: Q 09355

### Nico Manufacturing Ltd

Oxford Road, Clacton-on-Sea  
Essex CO15 3TJ, England.

Tel: 01255 422333

Fax: 01255 432909

E-mail: sales@nico.co.uk

Web: www.nico.co.uk

# telescopic shootbolt

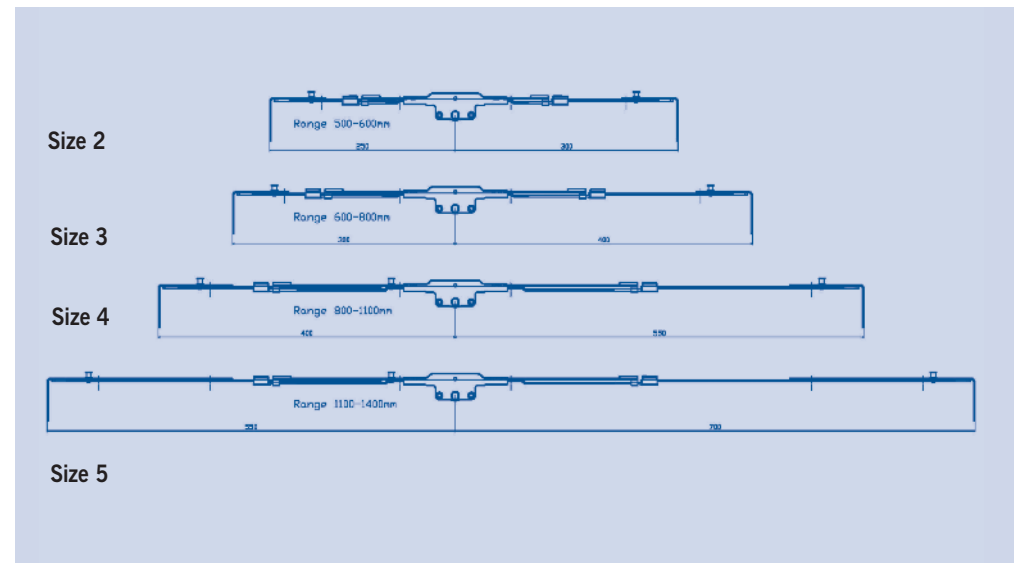
## Technical Data

The Telescopic Shootbolt is fast and easy to fit in a standard Eurogroove, and for fabricator convenience it uses the same routing preparation as Nico Espagnolette Bolts and MultiLocks.

Heavy gauge materials and fixing points protect against attack.

The Shootbolt features a 20mm or 22mm Gearbox and eccentric cams of 7.8mm or 9mm. The cams allow weatherseal pressure adjustment of +/- 1mm.

The Telescopic Shootbolt has been endurance tested to 30,000 cycles in the Nico Test Centre.



## Telescopic Shootbolts

20mm Backset Telescopic Shootbolts				
Description	Product Order No.(7.8mm)	Product Order No.(9mm)	Number Of Mushroom Cams	Box Quantity
Size 2 Telescopic Shootbolt	9795620	9795620	2	20
Size 3 Telescopic Shootbolt	9796820	9796820	2	20
Size 4 Telescopic Shootbolt	97981120	97981120	3	20
Size 5 Telescopic Shootbolt	979111420	979111420	3	20
22mm Backset Telescopic Shootbolts				
Description	Product Order No.(7.8mm)	Product Order No.(9mm)	Number Of Mushroom Cams	Box Quantity
Size 2 Telescopic Shootbolt	9795622	9795622	2	20
Size 3 Telescopic Shootbolt	9796822	9796822	2	20
Size 4 Telescopic Shootbolt	97911122	97911122	3	20
Size 5 Telescopic Shootbolt	979111422	979111422	3	20

**For sales, call 01255 422333 or email sales@nico.co.uk**