



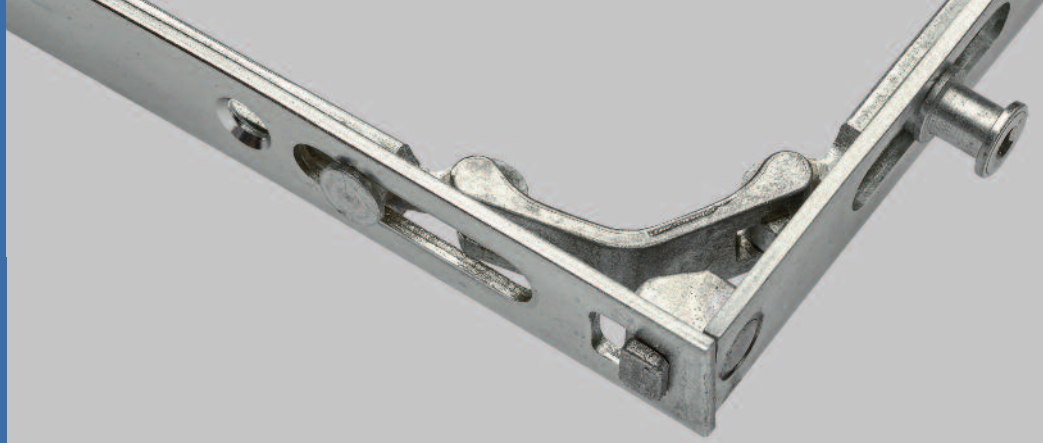
**MADE IN BRITAIN**

**SBD Member Company**

**Adjustable compression**

**Supercoat 500 Corrosion  
Resistant Finish**

**ISO 9001:2015  
Manufacturer**



## wrap around gearing system

### for additional locking points



*ABOVE: Nico Mk1 Shootbolt Gearbox.*

Nico Wrap Around Gearing is fast and easy to use, providing additional mushroom cam locking points for windows.

It connects to Nico MK 1 shootbolt gearboxes, and has a 400mm return which travels around the corner of the sash rebate and gives an extra locking point. It does not require any routing of the corner with a standard eurogroove depth, and gives extra window compression when a night vent facility is not required.



*ABOVE: Wrap around corner detail.*

Nico MK1 gearboxes are endurance tested over 30,000 cycles, and the eccentric 9mm cams on the extensions allow weatherseal adjustment of +/- 1mm. What is more the attractive Supercoat 500 silver finish provides excellent corrosion resistance.



*ABOVE: Nico Supercoat 500 is a special corrosion resistant coating. Test Results indicate that finished products have achieved grade 5 (exceptionally high resistance to corrosion) as defined in BS EN 1670:2007, making them suitable for coastal or industrial environments.*

**For sales, call 01255 422333 or email [sales@nico.co.uk](mailto:sales@nico.co.uk)**



## The Hardware Specialists

Nico is a leading UK manufacturer of window and door hardware.

Established in 1874 and based in Clacton, Essex, the company makes over a million components a week in its UK production facility.

Nico provides a complete in-house service - from design, tooling, manufacturing, finishing and packaging - and is a unique example of successful British engineering.

At Nico, we are passionate about all the products we make - and every aspect of the business is geared to providing the very best in quality, sales and service support



### Nico Manufacturing Ltd

Oxford Road, Clacton-on-Sea  
Essex CO15 3TJ, England.

Tel: 01255 422333

Fax: 01255 432909

E-mail: [sales@nico.co.uk](mailto:sales@nico.co.uk)

Web: [www.nico.co.uk](http://www.nico.co.uk)

# wrap around gearing

## Technical Data

Fit a Nico MK 1 gearbox to a prepared sash with a 12mm x 110mm slot (the handle symbol on the gearbox faceplate shows the locked position).

Link the gearing using the integral connecting link. Line up and mark the connecting extension using the index marks on the gearbox faceplate and then crop the extension.

Fit the teeth of the extension into the gearbox coupler (under the faceplate), slide the cover under the gearbox faceplate and insert screws.

Finally Fit the keeps using the index marks on the sides of the keeps as a guide to the cams locked position.

## Wrap around gearing

Description	Part No	Rebate Size (Set)	Box Quantity
MK1 Gearbox 20mm B/set NO CAMS	94205	All	20
MK1 Gearbox 22mm B/set NO CAMS	94225	All	20
Size 2. 2 Vertical Cams	TEL:939W245	360-440mm	20
Size 3. 1 Horizontal, 1 Vertical Cam	TEL:939W345	440-740mm	20
Size 4. 2 Horizontal, 1 Vertical Cam	TEL:939W445	740-1040mm	20
Size 5. 2 Horizontal, 1 Vertical Cam	TEL:939W545	1040-1340mm	20

**PLEASE NOTE:** Part Numbers with a TEL prefix are made to order and have minimum order quantities. Please contact Nico for further details.

**For sales, call 01255 422333 or email [sales@nico.co.uk](mailto:sales@nico.co.uk)**